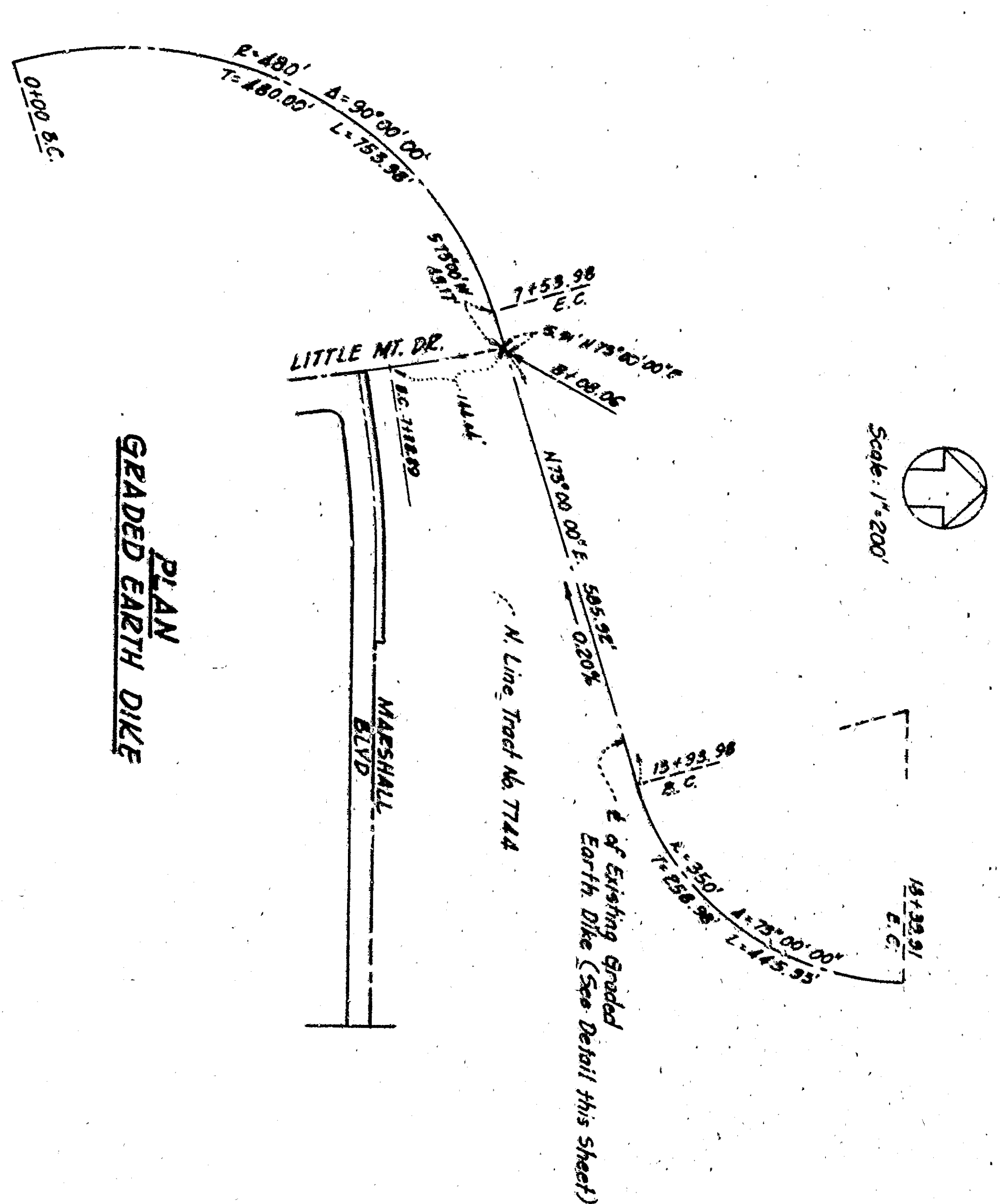
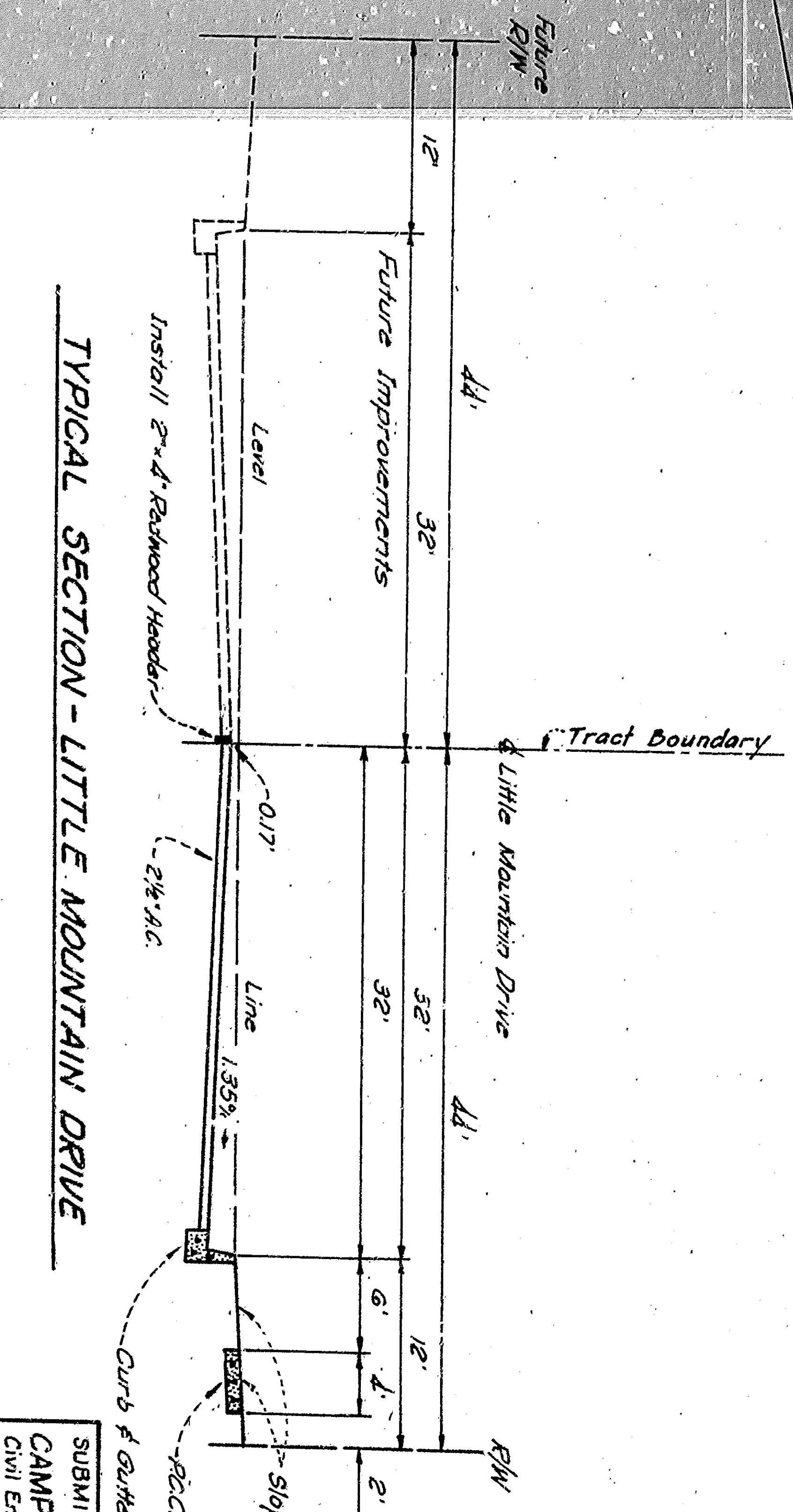
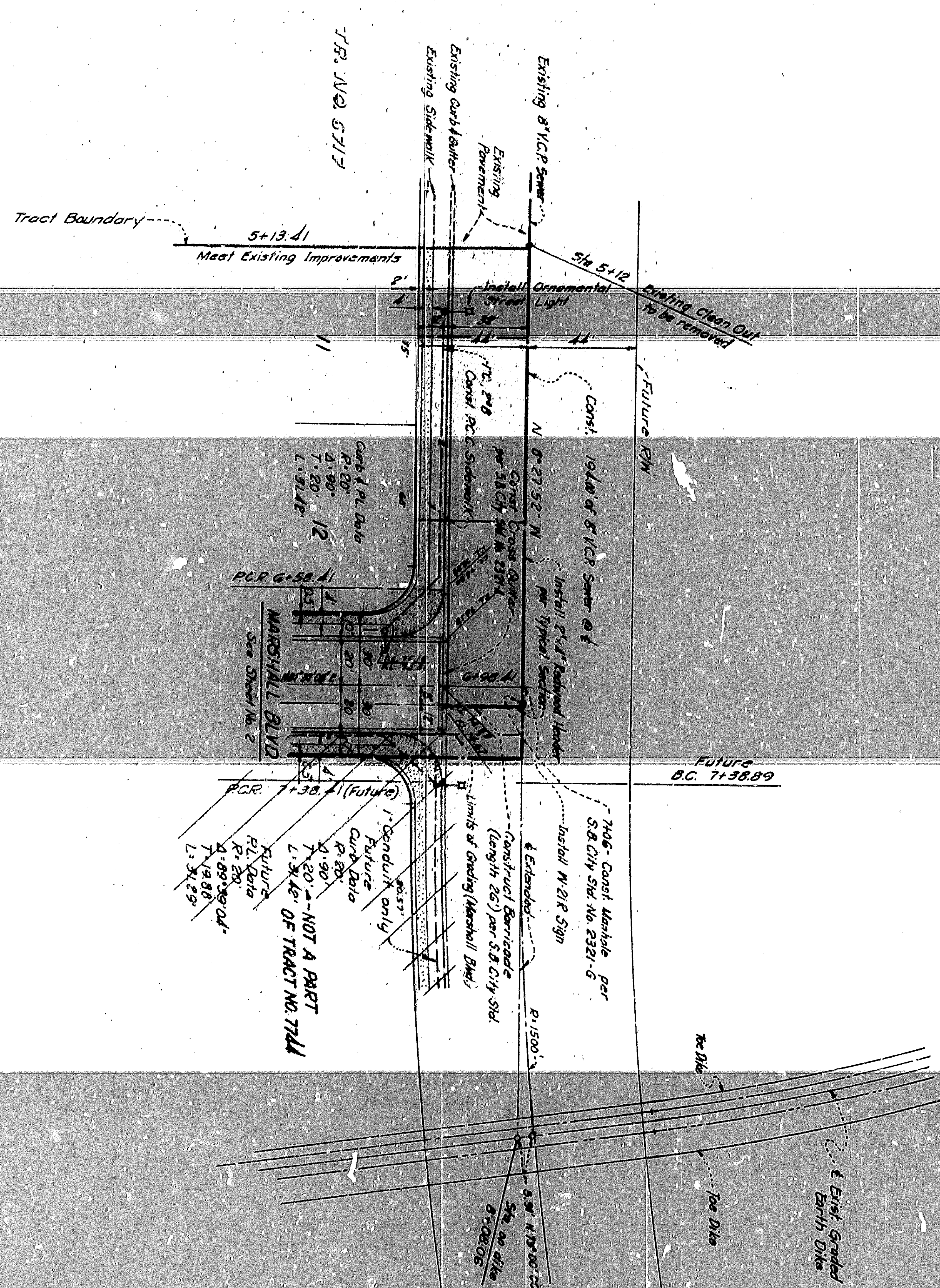
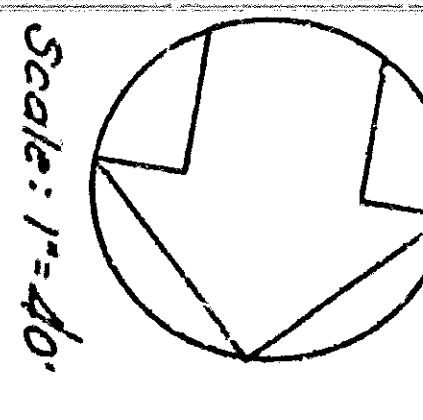


**LITTLE MOUNTAIN DRIVE**



**TYPICAL SECTION  
GRADED EARTH DILE**

**GENERAL NOTES**

1. All work embodied on these plans shall be done in conformity with applicable provisions of the Uniform Building Code (UBC) and the International Building Code (IBC).
2. All Standard Cross Sections of Curb, Gutter, Slope and (if applicable) of San Bernardino Dept. of Engineering, Std. Drawing No. 2327.
3. 3'-4" Wires connecting sewer to be constructed shown on plans thus 2' of 2" percent from the Man Sewer and shall extend from the Man Sewer to the Property Line.
4. Sewer laterals to be constructed of either "Wedge-Link", "Spand-Shell" or "Band-Saw" clay pipe or asbestos cement pipe. Sewer Manholes shall be constructed of either "Wedge-Link", "Spand-Shell" or "Band-Saw" clay pipe.
5. All house connections are open outside and exact locations shall be determined in the Field.
6. Manhole frames and covers to be installed by Sewer Contractor. City Engineer shall verify, and upon completion of paving, the Sewer Contractor shall be required to install Manhole frames to seal (thru) and be approved by the City Engineer.
7. The existence and location of any underground utility pipes or structures shown on these plans are obtained by a search of the available records. To the best of our knowledge there are no existing utilities except as shown on these plans. The Contractor is required to take due precautionary measures to protect the utility lines shown and any other lines not of record or not shown on these plans.
8. Bench Mark: - U.S.C. 465 - about 4.0 m. N.W. along 4185 ft. from Union Sta. about 0.45 m. S.E. of Wagon 77, of Signal 712, in top of No. 10. of case foundation and 2.3 feet S.W. of S.W. corner of S.W. tract. Std. disc stamped 1-10-57, 12th 130337 (also 280 40-320 City Utility).
9. Proposed 1-1/2" Utility System in accordance with Ordinance No. 1884 shall be installed as shown on the plans.
10. Subgrade shall be compacted to 95% of the density as determined by optimum moisture maximum density.

1	6/1/57	Approved	City Engineer
2	6/1/57	Approved	City Engineer
3	6/1/57	Approved	City Engineer
4	6/1/57	Approved	City Engineer
5	6/1/57	Approved	City Engineer
6	6/1/57	Approved	City Engineer
7	6/1/57	Approved	City Engineer
8	6/1/57	Approved	City Engineer
9	6/1/57	Approved	City Engineer
10	6/1/57	Approved	City Engineer
11	6/1/57	Approved	City Engineer
12	6/1/57	Approved	City Engineer
13	6/1/57	Approved	City Engineer
14	6/1/57	Approved	City Engineer
15	6/1/57	Approved	City Engineer
16	6/1/57	Approved	City Engineer
17	6/1/57	Approved	City Engineer
18	6/1/57	Approved	City Engineer
19	6/1/57	Approved	City Engineer
20	6/1/57	Approved	City Engineer

DEPARTMENT OF ENGINEERING  
CITY OF SAN BERNARDINO  
IMPROVEMENT PLANS  
TRACT NO. 7744

APPROVED: [Signature] 6/1/57  
CITY ENGINEER

DESIGNED BY: [Signature]  
DRAWING NO. 3457

RECOMMENDED BY: [Signature]  
SHEET 1 OF 2 SHEETS

